

Surgical Research in Switzerland

Preemptive Endoluminal Vacuum Therapy to Reduce Morbidity after Minimally Invasive Ivor Lewis Esophagectomy: Including a Novel Grading System For Postoperative Endoscopic Assessment of GI-Anastomoses.

Müller PC, Morell B, Vetter D, Raptis DA, Kapp JR, Gubler C, Gutschow CA.

Ann Surg. 2021 Jul

[How often is a chest tube needed following thoracic trauma in the severely injured-and when is more needed?: Data from a Swiss trauma center for planning of resources and surgical training].

Walkner S, Amsler F, Gross T.

Chirurg. 2021 Aug

A systematic review of the perforated duodenal diverticula: lessons learned from the last decade.

Kapp JR, Müller PC, Gertsch P, Gubler C, Clavien PA, Lehmann K.

Langenbecks Arch Surg. 2021 Jun

[Emergency room and major trauma treatment is a „loss-making business“: a Swiss trauma center experience with current DRG reimbursement].

Gross T, Amsler F.

Unfallchirurg. 2021 Sep

Comparison of Injury Patterns between Electric Bicycle, Bicycle and Motorcycle Accidents.

Spörrli E, Halvachizadeh S, Gamble JG, Berk T, Allemann F, Pape HC, Rauer T.

J Clin Med. 2021 Jul

Medically graded reduced capacity to work (RCW) following significant injury as explained by patient related outcome measures (PROMs) – A prospective trauma center evaluation.

Gross T, Morell S, Amsler F.

Disabil Health J. 2021 May

Cell Therapy for Anal Sphincter Incontinence: Where Do We Stand?

Balaphas A, Meyer J, Meier RPH, Liot E, Buchs NC, Roche B, Toso C, Bühler LH, Gonelle-Gispert C, Ris F.

Cells. 2021 Aug

Incidence of Fat Embolism Syndrome in Femur Fractures and Its Associated Risk Factors over Time-A Systematic Review.

Lempert M, Halvachizadeh S, Ellanti P, Pfeifer R, Hax J, Jensen KO, Pape HC.

J Clin Med. 2021 Jun

Ris F, Hellan M, Douissard J, Nieva JJ, Triponez F, Woo Y, Geller D, Buchs NC, Buehler L, Moenig S, Iselin CE, Karenovics W, Petignat P, Lam GT, Undurraga Malinervo M, Tuttle R, Ouellette J, Bose D, Ismail N, Toso C.

Blood-Based Multi-Cancer Detection Using a Novel Variant Calling Assay (DEEPGENTM): Early Clinical Results.

Cancers (Basel). 2021 Aug

Caecal diverticulitis can be misdiagnosed as acute appendicitis: a systematic review of the literature.

Uhe I, Meyer J, Viviano M, Naiken S, Toso C, Ris F, Buchs NC.

Colorectal Dis. 2021 Jul



erbe
power your performance.

Erbe – Partner für Ihr Krankenhaus

- +** Massgeschneiderte Systeme, exakt auf die Fachdisziplin zugeschnitten.
- +** Effiziente, schnelle und zuverlässige Lieferung. Absolute Termintreue durch eigenes Lager in der Schweiz.
- +** Kompetenter Support durch exzellent ausgebildete Medizinprodukteberater und den Vertriebsinnendienst.
- +** Wir teilen unser gesamtes Wissen. In Präsenzs Schulungen vor Ort, in der Erbe Academy oder online.
- +** Professioneller, flexibler Herstellerservice.

Erbe Swiss AG Winterthur 052 233 37 27 info@erbe-swiss.ch erbe-swiss.ch

© Erbe Elektromedizin GmbH 2021

Incidence of Hepatocellular Carcinoma in Patients With Nonalcoholic Fatty Liver Disease: A Systematic Review, Meta-analysis, and Meta-regression.

Orci LA, Sanduzzi-Zamparelli M, Caballol B, Sapena V, Colucci N, Torres F, Bruix J, Reig M, Toso C.
Clin Gastroenterol Hepatol. 2021 May

Validation of a Visual-Based Analytics Tool for Outcome Prediction in Polytrauma Patients (WATSON Trauma Pathway Explorer) and Comparison with the Predictive Values of TRISS.

Niggli C, Pape HC, Niggli P, Mica L.
J Clin Med. 2021 May

Does the insurance status influence in-hospital outcome? A retrospective assessment in 30,175 surgical trauma patients in Switzerland.

Funke L, Canal C, Ziegenhain F, Pape HC, Neuhaus V.
Eur J Trauma Emerg Surg. 2021 May

The effect of Covid-19 on the willingness to use video consultations among orthopedic and trauma outpatients: a multi-center survey in 1400 outpatients.

Scherer J, Back DA, Thienemann F, Kaufmann E, Neuhaus V, Willy C, Hepp P, Pape HC, Osterhoff G.
Eur J Trauma Emerg Surg. 2021 Aug

Short-term outcome of isolated lateral malleolar fracture treatment is independent of hospital trauma volume or teaching status: a nationwide retrospective cohort study.

Vehling M, Canal C, Ziegenhain F, Pape HC, Neuhaus V.
Eur J Trauma Emerg Surg. 2021 Aug

Sacral nonunion following acute major fractures: how to heal the holy bone? Results from a systematic literature review.

Kalbas Y, Kumabe Y, Pape HC.
Injury. 2021 Aug

A retrospective cohort study of 27,049 polytraumatized patients age 60 and above: identifying changes over 16 years.

Kalbas Y, Lempert M, Ziegenhain F, Scherer J, Neuhaus V, Lefering R, Teuben M, Sprengel K, Pape HC, Jensen KO; TraumaRegister DGU.
Eur Geriatr Med. 2021 Jul

Inter-hospital transfer of polytrauma and severe traumatic brain injury patients: Retrospective nationwide cohort study using data from the Swiss Trauma Register.

Hasler RM, Rauer T, Pape HC, Zwahlen M.
PLoS One. 2021 Jun

Auflösung der Frage von S. 7

Images in Surgery

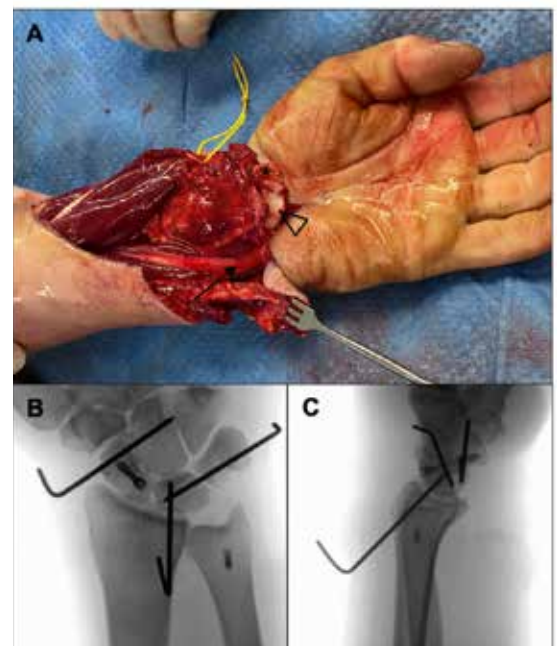
Case Solution:

Correct answer: B

When treating fracture-dislocations of the wrist with volar penetration of the distal forearm, a high index of suspicion for concomitant neurovascular injury is mandatory and attempts of closed reduction should be avoided. Indeed, in the present case, the ulnar nerve and artery as well as the flexor carpi ulnaris and the deep flexors were interposed between radius and ulna. In contrast, the radial artery and the median nerve were found dorso-radially to the radial styloid (Fig. 2A: arrow = trapped structures, arrowhead = lunate, asterisk = proximal pole of scaphoid, vessel loop = median nerve). Through an extended volar approach including carpal tunnel release, the interposed structures were replaced. Thereafter, DRUJ stabilization was achieved with TFCC-refixation. Wrist reduction was done followed by a dorsal approach through the 3d extensor compartment. The scaphoid fracture was fixed with a 3.0mm cannulated screw and the carpal bones were transfixed with K-wires. Finally, the radiocarpal ligaments were fixed with bone anchors and sutures. Instead of external fixation we used radio-lunate K-wire transfixation (Figs. 2B and 2C). Nine months after surgery, the patient is back to work in construction and pain-free despite a scaphoid non-union and signs of radiocarpal arthritis.

Open fracture-dislocations of the wrist are commonly resulting from extreme hyperextension trauma¹. Additional radioulnar dissociation has been reported with entrapment of neurovascular structures bet-

ween the forearm bones^{2,3}. Irreducible fracture-dislocations of the wrist are challenging injuries, particularly if they come along with radioulnar dissociation. These injuries require open reduction and eventually repair of neurovascular injury and should be done by hand surgeons familiar with complex wrist injuries.



References

1. Mayfield JK, Johnson RP, Kilcoyne RK. Carpal dislocations: Pathomechanics and progressive perilunar instability. *J Hand Surg Am.* 1980;5:226-41.
2. Fernandez DL. Irreducible radiocarpal fracture-dislocation and radioulnar dissociation with entrapment of the ulnar nerve, artery and flexor profundus II-V-Case report. *J Hand Surg Am.* 1981;6:456-61.
3. Ayekoloye CI, Shah N, Kumar A, Kurdy N. Irreducible dorsal radiocarpal fracture dislocation with dissociation of the distal radioulnar joint: A case report. *Acta Orthop Belg.* 2002;68:171-4.